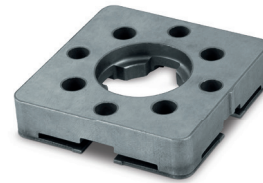
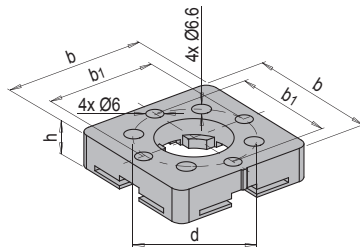





System 1

**PRODUKTBESCHREIBUNG**

- » Für automatischen Wechsel geeignet
- » 4 Durchgangsbohrungen für Befestigungsschrauben M6
- » Gehärtet



b	b1	h	d	 Stk. / VPE	Nr.	EUR
54	42	12,5	40	8	HER 1922/8	< >