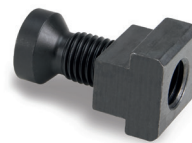
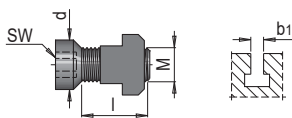


DESCRIZIONE DEL PRODOTTO

- » Compatibile con HWS 106
- » Classe di resistenza 12,9



l	d	SW	SK ¹⁾	M	b1	N°	EUR
23	16	6	22	M12	14	HWS 1005/22 /12/14	<>
24,5	17,9	8	30-32	M12	14	HWS 1005/30-32/12/14	<>
28,5	17,9	8	30-32	M12	16	HWS 1005/30-32/12/16	<>
30	22,4	8	30	M16	18	HWS 1005/30 /16/18	<>
38	22,4	8	30	M16	22	HWS 1005/30 /16/22	<>
32	22,4	10	40-43	M16	18	HWS 1005/40-43/16/18	<>
40	22,4	10	40-43	M16	22	HWS 1005/40-43/16/22	<>
32	29	12	49	M20	22	HWS 1005/49 /20/22	<>
51,5	35	12	60	M24	28	HWS 1005/60 /24/28	<>

1) SK: Adatto per attrezzi per staffaggio con forza di serraggio massima [kN]