

neusburger

SETTING STANDARDS

STANDARD PARTS FOR TRANSFER AND LARGE DIES



STANDARD PARTS IN TRANSFER AND LARGE DIE MAKING

Particularly for transfer and large dies, high demands are placed on standard parts. Therefore, many of our components comply with VDI guidelines.

These components enable you to start future projects quickly and complete them with short lead times.

Find out about our wide range of high-quality standard parts for transfer and large dies for yourself.



OVERVIEW



GUIDES

PAGE 6 – 10

In combination with the bronze sliding guide bush with solid lubricant, our guide pillar is ideally suited for applications in transfer and large die making. The guiding system is available in diameters from 40 to 100 mm.



FLAT GUIDING STOCK

PAGE 11 – 23

We offer different maintenance-free sliding elements in the variations: bronze with solid lubricant, steel and steel with sintered sliding surface.



ACTIVE PARTS

PAGE 24 – 31

In the product group of active parts there are various gauges for positioning of the raw material as well as stamping and visual locator setting punches.



CUTTING ELEMENTS

PAGE 32 – 38

The ball-lock quick change system is the standard in transfer and large die making and impresses with its quick and easy changing of cutting punches.



LIFTING AND RETAINING ELEMENTS

PAGE 39 – 47

Our products from the group lifting and retaining elements ensure reliable lifting and transporting of dies. The products are CE certified and therefore meet the highest safety standard.

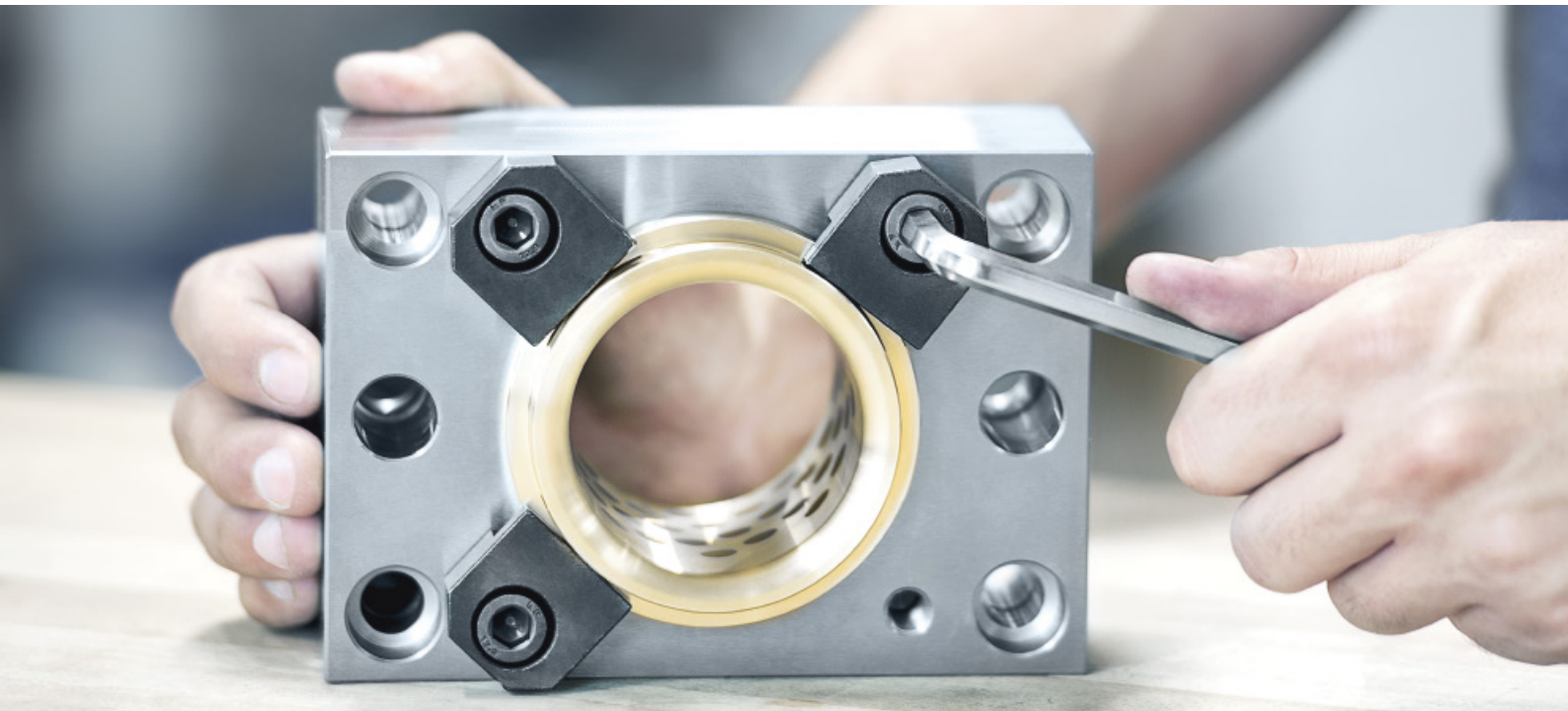


ATTACHMENTS

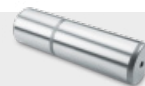
PAGE 48 – 55

With different centring and spacers, the tool halves can be precisely and exactly centred and aligned to the other.

GUIDING



E 5040 Guide pillar, plain, for large dies



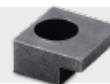
E 5130 Sliding guide bush, bronze, with solid lubricant and collar



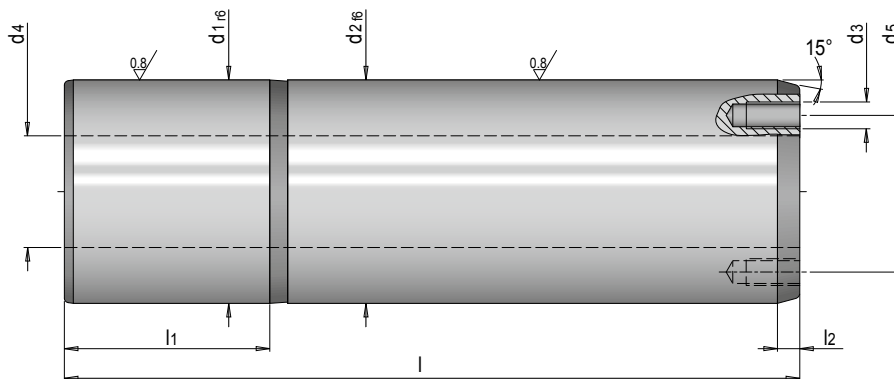
E 5193 Bush retainer plate for E 5130



E 5276 Retainer clip, rectangular



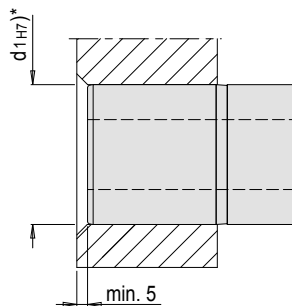
E 5040 GUIDE PILLAR, PLAIN, FOR LARGE DIES



Mat.: 1.7131 ≈ 62 HRC ISO 9182-3 (DIN 9833) only suitable for E 5130 and E 5156

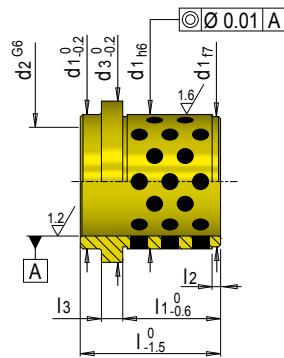


d1	l1	l2	d3	d4	d5	d2	l	No.
40	56	8	-	-	-	40	200	E 5040/ 40 x 200
							224	E 5040/ 40 x 224
							250	E 5040/ 40 x 250
							280	E 5040/ 40 x 280
50	70	10	-	-	-	50	250	E 5040/ 50 x 250
							280	E 5040/ 50 x 280
							315	E 5040/ 50 x 315
							355	E 5040/ 50 x 355
63	80	-	-	-	-	63	280	E 5040/ 63 x 280
							315	E 5040/ 63 x 315
							355	E 5040/ 63 x 355
							400	E 5040/ 63 x 400
80	100	-	1x M12	-	-	80	250	E 5040/ 80 x 250
							280	E 5040/ 80 x 280
							315	E 5040/ 80 x 315
							355	E 5040/ 80 x 355
100	125	-	2x M12	50	72	100	400	E 5040/ 80 x 400
							280	E 5040/100 x 280
							315	E 5040/100 x 315
							355	E 5040/100 x 355
							400	E 5040/100 x 400
							450	E 5040/100 x 450



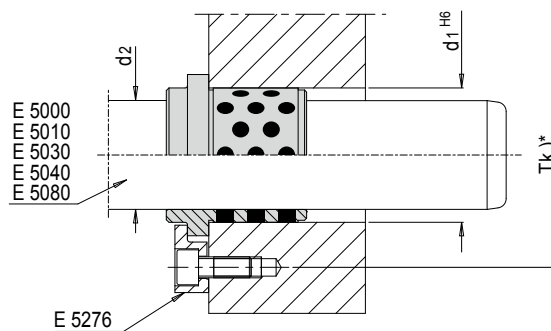
$d_{1(H7)}^*$ bore tolerance for press fit

E 5130 SLIDING GUIDE BUSH, BRONZE, WITH SOLID LUBRICANT AND COLLAR



Mat.: 2.0598 ≈ 200 HB / Graphite t max. = 200°C ≈ DIN 9834 / ISO 9448

d ₁	d ₃	Tk	E 5276/...	l	l ₁	l ₂	l ₃	d ₂	No.
28	34	54	E 5276/ 6/ 6.3	32	20	2.5	6.3	20	E 5130/ 20
32	40	58		40	30	3		25	E 5130/ 25
40	50	66		50	38	4		32	E 5130/ 32
50	63	79		63	48	5		40	E 5130/ 40
63	71	89		71	54	6		50	E 5130/ 50
80	90	123	E 5276/10/10	80	61	8	10	63	E 5130/ 63
100	112	143		100	78	10		80	E 5130/ 80
125	140	168		125	104	12.5		100	E 5130/100

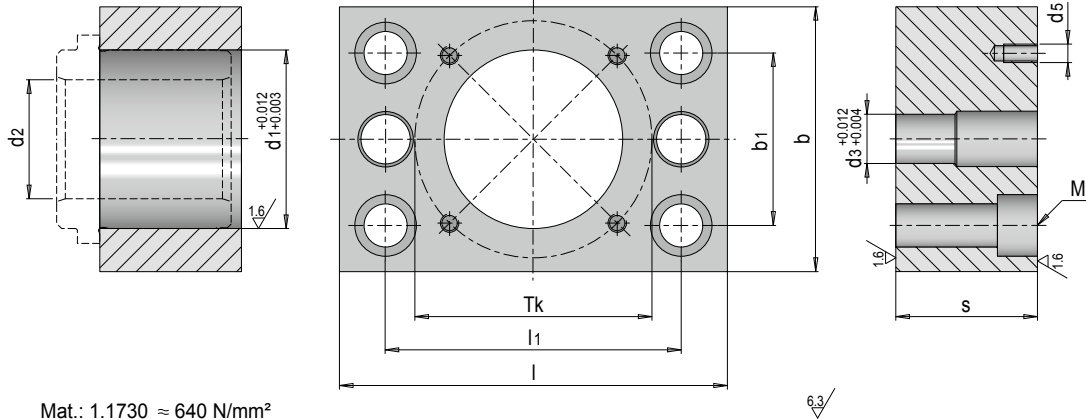


Tk)* pitch diameter threads



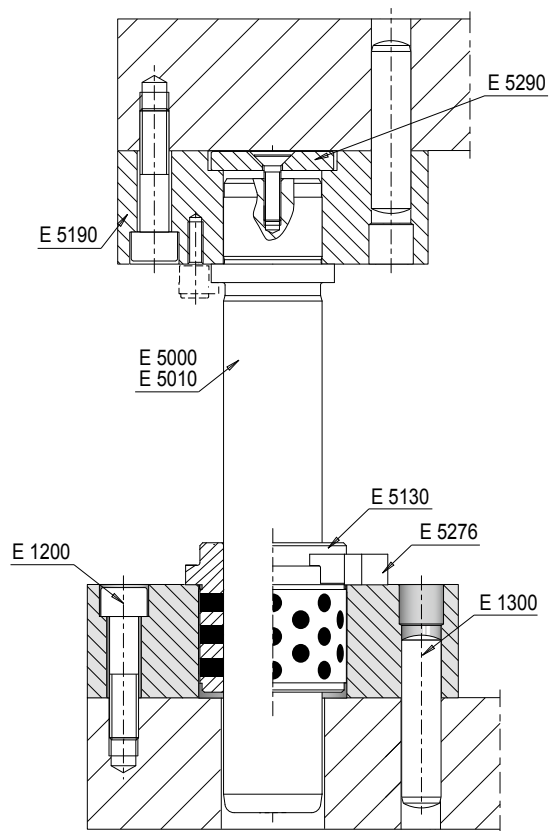
- » Optimal emergency operating features through graphite inserts for a moderate number of strokes per minute
- » Can be combined with all Meusburger guide pillars
- » The bush and the retainer clip are interchangeable according to DIN 9834 / ISO 9448

E 5193 BUSH RETAINER PLATE FOR E 5130

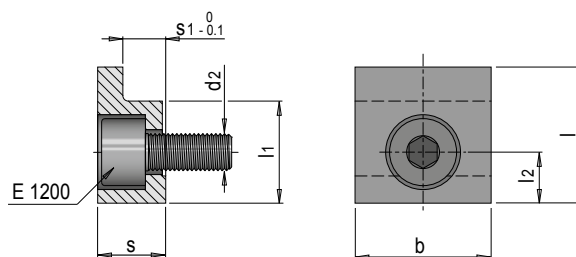


Mat.: 1.1730 \approx 640 N/mm²

b	l	M	Tk	l ₁	b ₁	d ₁	d ₃	d ₅	No.	l	d ₂	l	s	l	1730		
76	116	M12	66	86	46	40	16	M 6	E 5193		32	46			●		
86	126		79	96	56	50					40					56	●
96	136		89	106	66	63					50					56	●
116	166		123	136	86	80					63					66	●
136	186	M16	143	156	106	100		M 10		80	86			●			

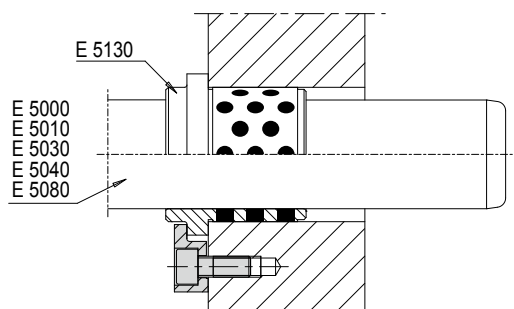


E 5276 RETAINER CLIP, RECTANGULAR



Mat.: 1.0503 $\approx 600 \text{ N/mm}^2$ DIN 9832 $\frac{32}{\nabla}$

b	l	s	l ₁	l ₂	d ₂	s ₁	No.
20	20	10	15	7.5	M 6	6.3	E 5276/ 6/ 6.3
32	32	16	22	11	M10	10	E 5276/10/10



SLIDING ELEMENTS



E 6110 SIN Flat guiding rail, steel with sintered sliding surface



E 6114 B Wear plate, bronze, self-lubricating, VDI 3357



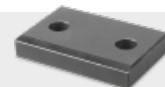
E 6114 ST Wear plate, steel, VDI 3357



E 6116 B Wear plate, bronze, self-lubricating, VDI 3357



E 6116 ST Wear plate, steel, VDI 3357



E 61161 Spacer for wear plate, VDI 3357



E 6120 B Angular guide, bronze with solid lubricant



E 6121 B Angular guide, bronze, self-lubricating, VDI 3357



E 6135 B 'V' driver, bronze, self-lubricating, VDI 3357



E 6136 'V' driver, steel, VDI 3357



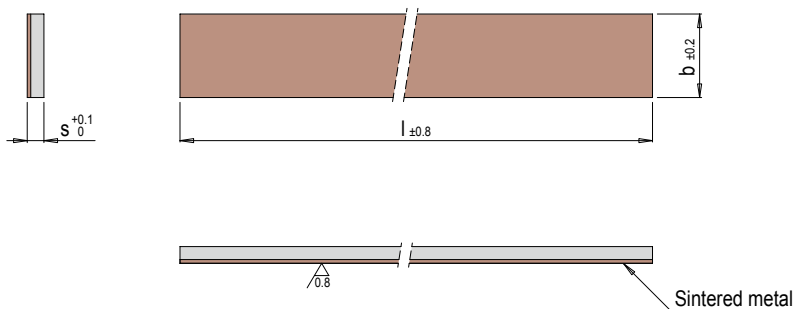
E 6140 B Cam dwell wear plate, self-lubricating, VDI 3357



E 6140 ST Cam dwell wear plate, steel, VDI 3357



E 6110 SIN FLAT GUIDING RAIL, STEEL WITH SINTERED SLIDING SURFACE



Mat.: steel Sint+MoS2

b	l	s	No.
40	250	5	E 6110 SIN/ 40x 250/ 5
		6	E 6110 SIN/ 40x 250/ 6
	300	8	E 6110 SIN/ 40x 300/ 8
50	600	10	E 6110 SIN/ 50x 600/10
		12	E 6110 SIN/ 50x 600/12
80		12	E 6110 SIN/ 80x 600/12



E 6110 SIN Flat guiding rail, steel with sintered sliding

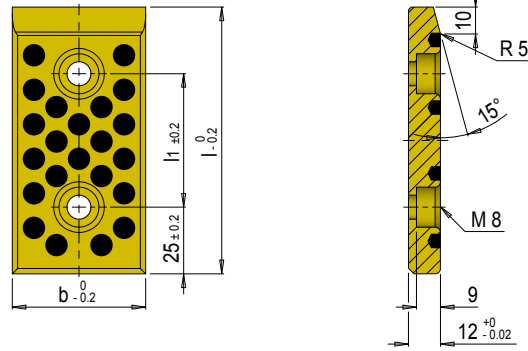
Sintered metal:

- » Allows highest contact pressure
- » Enables maximum sliding speeds
- » Offers highest wear resistance

E 6114 B WEAR PLATE, BRONZE, SELF-LUBRICATING, VDI 3357



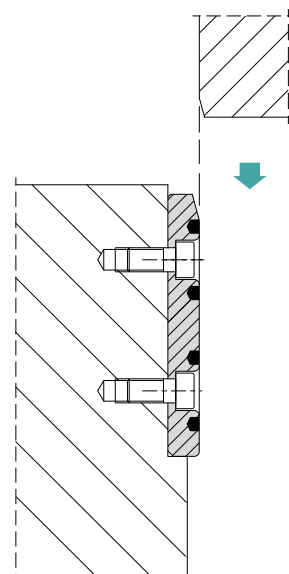
S
12 mm



Mat.: 2.0598 / Graphite \approx 180 HB

VDI 3357

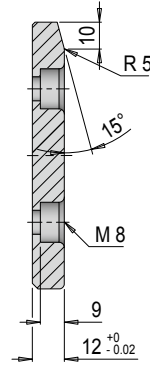
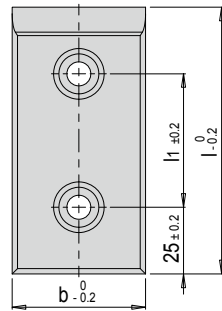
l_1	b	l	No.
30	30	80	E 6114 B/ 30x 80
50		100	E 6114 B/ 30x100
30	40	80	E 6114 B/ 40x 80
50		100	E 6114 B/ 40x100
75		125	E 6114 B/ 40x125
110	50	160	E 6114 B/ 40x160
30		80	E 6114 B/ 50x 80
50		100	E 6114 B/ 50x100
75		125	E 6114 B/ 50x125
110		160	E 6114 B/ 50x160
150	60	200	E 6114 B/ 50x200
30		80	E 6114 B/ 60x 80
50		100	E 6114 B/ 60x100
75		125	E 6114 B/ 60x125
110	80	160	E 6114 B/ 60x160
150		200	E 6114 B/ 60x200
30		80	E 6114 B/ 80x 80
50		100	E 6114 B/ 80x100
75		125	E 6114 B/ 80x125
110		160	E 6114 B/ 80x160
150		200	E 6114 B/ 80x200



E 6114 ST WEAR PLATE, STEEL, VDI 3357



S
12 mm



Mat.: 1.7131 58 - 60 HRC

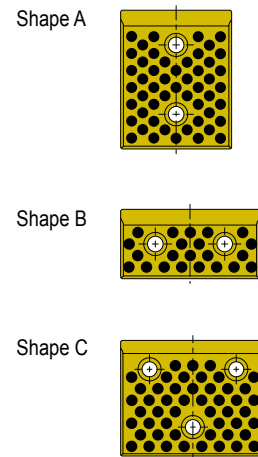
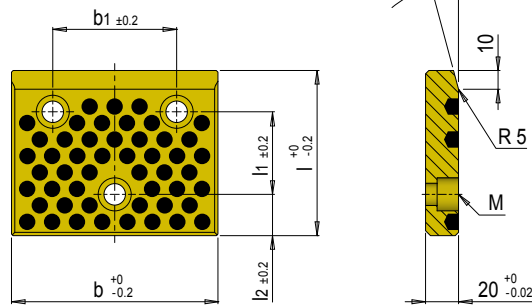
VDI 3357

l_1	b	l	No.
30	30	80	E 6114 ST/ 30x 80
50		100	E 6114 ST/ 30x100
30	40	80	E 6114 ST/ 40x 80
50		100	E 6114 ST/ 40x100
75		125	E 6114 ST/ 40x125
110	50	160	E 6114 ST/ 40x160
30		80	E 6114 ST/ 50x 80
50		100	E 6114 ST/ 50x100
75		125	E 6114 ST/ 50x125
110		160	E 6114 ST/ 50x160
150	60	200	E 6114 ST/ 50x200
30		80	E 6114 ST/ 60x 80
50		100	E 6114 ST/ 60x100
75		125	E 6114 ST/ 60x125
110		160	E 6114 ST/ 60x160
150	80	200	E 6114 ST/ 60x200
30		80	E 6114 ST/ 80x 80
50		100	E 6114 ST/ 80x100
75		125	E 6114 ST/ 80x125
110		160	E 6114 ST/ 80x160
150		200	E 6114 ST/ 80x200

E 6116 B WEAR PLATE, BRONZE, SELF-LUBRICATING, VDI 3357



S
20 mm



Mat.: 2.0598 / Graphite ≈ 180 HB

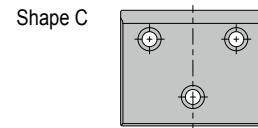
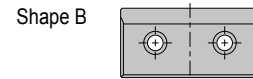
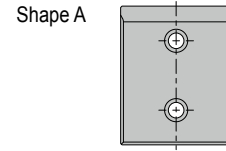
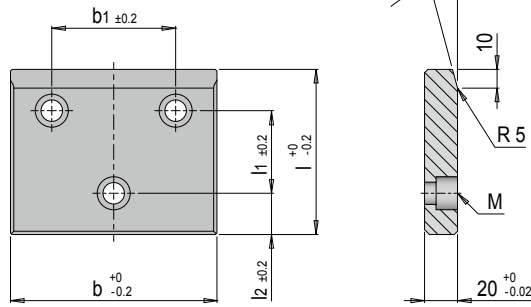
VDI 3357

Shape	M	l ₁	b ₁	l ₂	b	l	No.	
A	M12	50	-	25	50	100	E 6116 B/ 50x100	
		75				125	E 6116 B/ 50x125	
		110				160	E 6116 B/ 50x160	
B	M 8	-	30	-	80	50	E 6116 B/ 80x 50	
A	M12	30	-			-	80	E 6116 B/ 80x 80
		50					100	E 6116 B/ 80x100
		75		125	E 6116 B/ 80x125			
		110		160	E 6116 B/ 80x160			
		150			200	E 6116 B/ 80x200		
B		-	50	40	100	50	E 6116 B/100x 50	
		-				80	E 6116 B/100x 80	
A		50	-	25	100	100	E 6116 B/100x100	
		75				125	E 6116 B/100x125	
		110		160		E 6116 B/100x160		
		150		200		E 6116 B/100x200		
		170		40	250	E 6116 B/100x250		
B		-	75	25	125	50	E 6116 B/125x 50	
		-				80	E 6116 B/125x 80	
						40	100	E 6116 B/125x100
C		50	-	25	160	100	E 6116 B/125x100	
		75				125	E 6116 B/125x125	
		110		160		E 6116 B/125x160		
		150		200		E 6116 B/125x200		
		75		125		E 6116 B/160x125		
		110		160		E 6116 B/160x160		
		150		200		E 6116 B/160x200		

E 6116 ST WEAR PLATE, STEEL, VDI 3357



S
20 mm

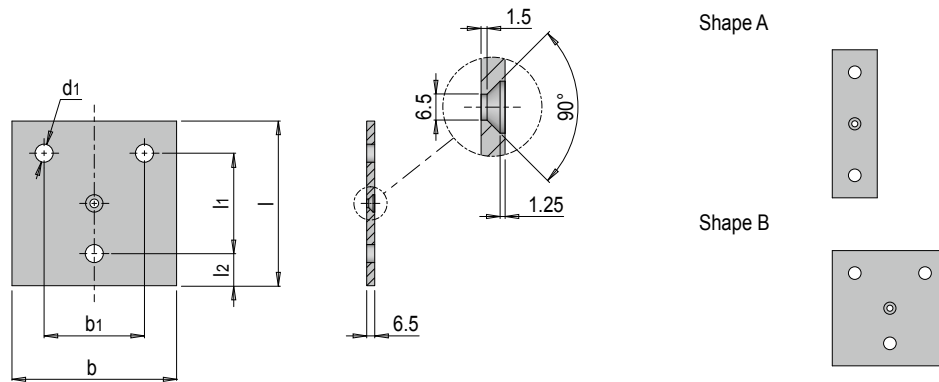


Mat.: 1.7131 58 - 60 HRC

VDI 3357

Shape	M	l ₁	b ₁	l ₂	b	l	No.	
A	M12	50	-	25	50	100	E 6116 ST/ 50x100	
		75				125	E 6116 ST/ 50x125	
		110				160	E 6116 ST/ 50x160	
B	M 8	-	30	-	80	50	E 6116 ST/ 80x 50	
A	M12	30	-			-	80	E 6116 ST/ 80x 80
		50					100	E 6116 ST/ 80x100
		75		125	E 6116 ST/ 80x125			
		110		160	E 6116 ST/ 80x160			
B	-	-	50	-	100	200	E 6116 ST/ 80x200	
B	-	-	40			50	E 6116 ST/100x 50	
	-	-	40			80	E 6116 ST/100x 80	
A	-	50	-	25	-	100	E 6116 ST/100x100	
		75		125		E 6116 ST/100x125		
		110		160		E 6116 ST/100x160		
		150		200		E 6116 ST/100x200		
A	-	170	-	40	-	250	E 6116 ST/100x250	
		-		25		125	50	E 6116 ST/125x 50
B	-	-	75	25	80		E 6116 ST/125x 80	
		-	40	100	E 6116 ST/125x100			
C	-	50	-	25	-	125	E 6116 ST/125x125	
		75		160		E 6116 ST/125x160		
		110		200		E 6116 ST/125x200		
		150		250		E 6116 ST/125x250		
		75		110		160	125	E 6116 ST/160x125
		110		160			E 6116 ST/160x160	
		150		200			E 6116 ST/160x200	
200	250	E 6116 ST/160x250						

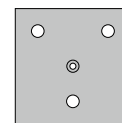
E 61161 SPACER FOR WEAR PLATE, VDI 3357



Shape A



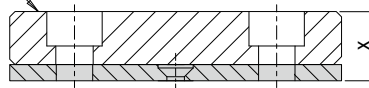
Shape B



Mat.: 1.0037

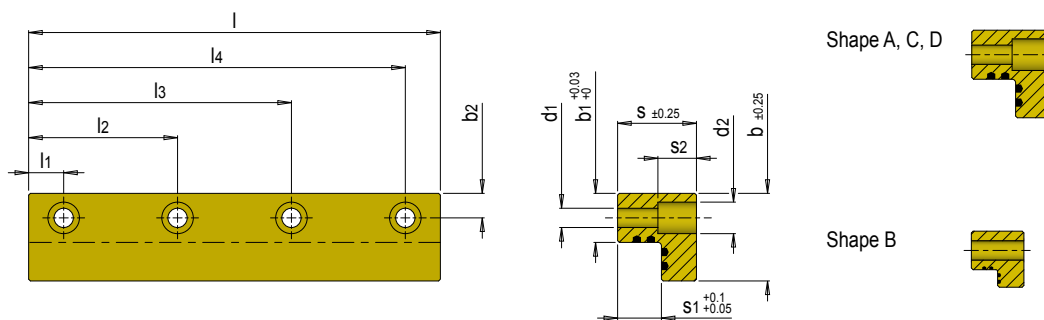
Shape	d1	l1	b1	l2	b	l	No.			
A	9	30	-	24	48	78	E 61161/ 48x 78			
		13.5				50	98	E 61161/ 48x 98		
	75					123	E 61161/ 48x123			
	110					158	E 61161/ 48x158			
	30					78	78	E 61161/ 78x 78		
	50					98	E 61161/ 78x 98			
	75				123	E 61161/ 78x123				
	110				158	E 61161/ 78x158				
	150				198	E 61161/ 78x198				
	50				98	98	E 61161/ 98x 98			
	75				123	E 61161/ 98x123				
	110				158	E 61161/ 98x158				
	150				198	E 61161/ 98x198				
	170	248			E 61161/ 98x248					
	B	50			75	75	24	123	98	E 61161/123x 98
									123	E 61161/123x123
									158	E 61161/123x158
									198	E 61161/123x198
75		110	110	24	158	123	E 61161/158x123			
						158	E 61161/158x158			
						198	E 61161/158x198			
						198	E 61161/158x198			

E 6116B
E 6116ST



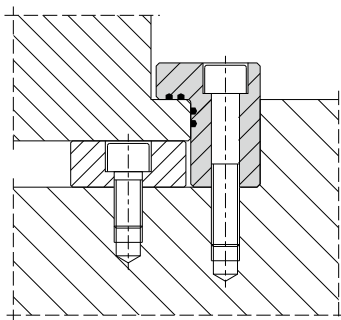
X matches E 61161 Spacer

E 6120 B ANGULAR GUIDE, BRONZE, SELF-LUBRICATING

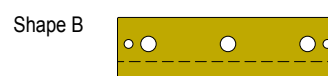
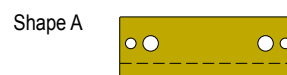
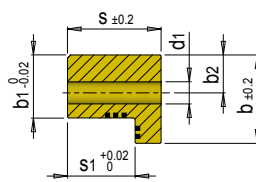
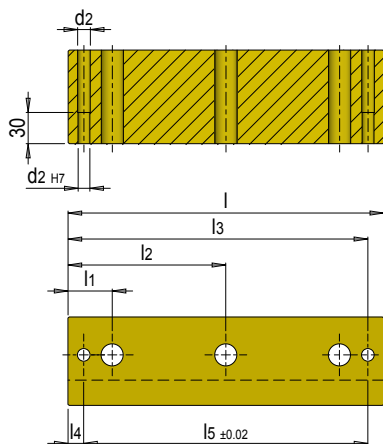


Mat.: 2.0598 / Graphite \approx 180 HB

Shape	b	b ₁	d ₁	l ₁	s ₁	b ₂	d ₂	l ₂	s ₂	l ₃	l ₄	s	l	No.
D	26	18	9	20	10	9	15	80	10	-	-	20	100	E 6120 B/20x100
								75	-	130	150		E 6120 B/20x150	
B	32	22	11	20	15	11	-	80	-	-	-	30	100	E 6120 B/30x100
								75	-	130	150		E 6120 B/30x150	
C	40	24	11	15	20	12	18	145	13	-	-	40	160	E 6120 B/40x160
A	50	28	11	20	25	14	18	75	22	125	180	45	200	E 6120 B/45x200



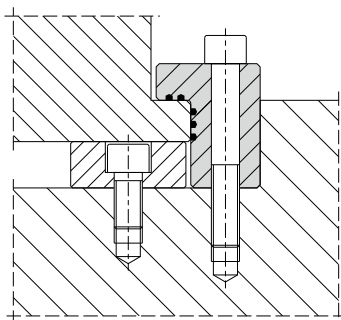
E 6121 B ANGULAR GUIDE, BRONZE, SELF-LUBRICATING VDI 3357



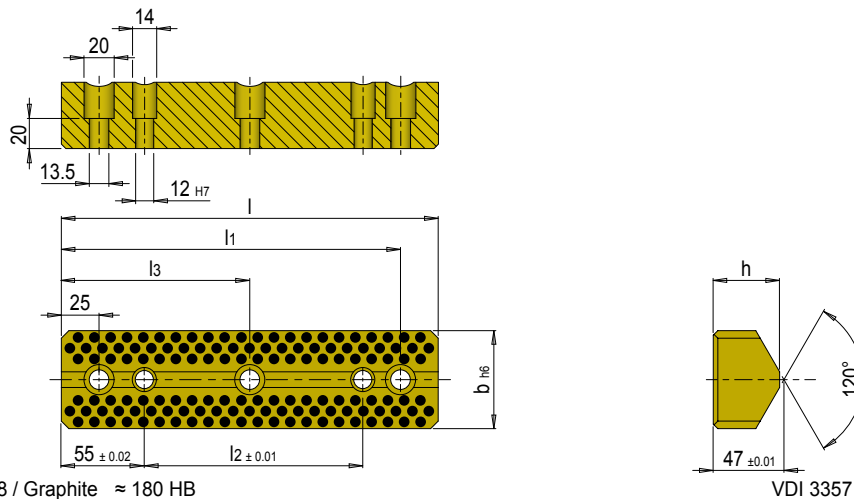
Mat.: 2.0598 / Graphite ≈ 180 HB

VDI 3357

Shape	b	b ₁	d ₁	l ₁	s ₁	b ₂	d ₂	l ₂	l ₃	l ₄	l ₅	s	l	No.
A	55	37	13.5	27.5	39	20	10	-	72.5	10	80	55	100	E 6121 B/55x100
									132.5		140		160	E 6121 B/55x160
B	70	50	17.5	35	55	30	12	-	125	12.5	135	75	160	E 6121 B/75x160
									165		175		200	E 6121 B/75x200
									185		195		220	E 6121 B/75x220
									125		215		225	250



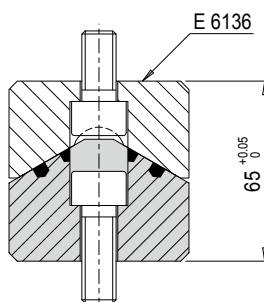
E 6135 B 'V' DRIVER, BRONZE, SELF-LUBRICATING VDI 3357



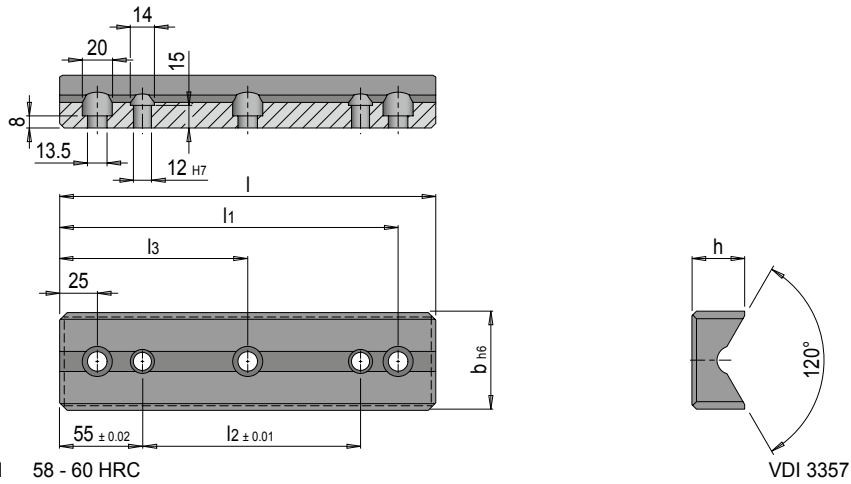
Mat.: 2.0598 / Graphite \approx 180 HB

VDI 3357

l_1	l_2	l_3	b	l	h	No.
125	45	-	65	150	44	E 6135 B/ 65x150/ 44
175	95	-	65	200	44	E 6135 B/ 65x200/ 44
225	145	125	65	250	44	E 6135 B/ 65x250/ 44
275	195	150	65	300	44	E 6135 B/ 65x300/ 44



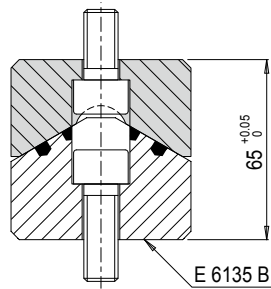
E 6136 ,V' DRIVER, STEEL, VDI 3357



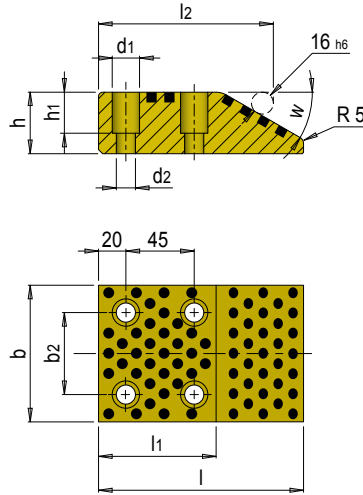
Mat.: 1.7131 58 - 60 HRC

VDI 3357

l_1	l_2	l_3	b	l	h	No.
125	45	-	65	150	35	E 6136/ 65x150/ 35
175	95	-	65	200	35	E 6136/ 65x200/ 35
225	145	125	65	250	35	E 6136/ 65x250/ 35
275	195	150	65	300	35	E 6136/ 65x300/ 35



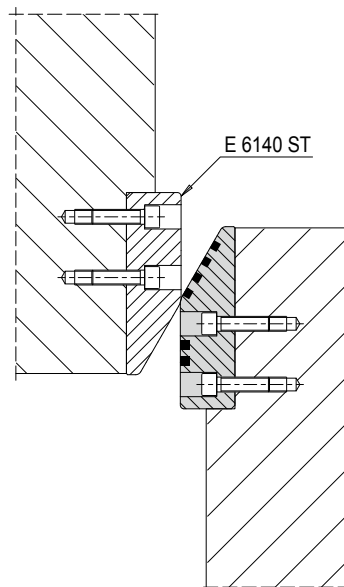
E 6140 B CAM DWELL WEAR PLATE, SELF-LUBRICATING, VDI 3357



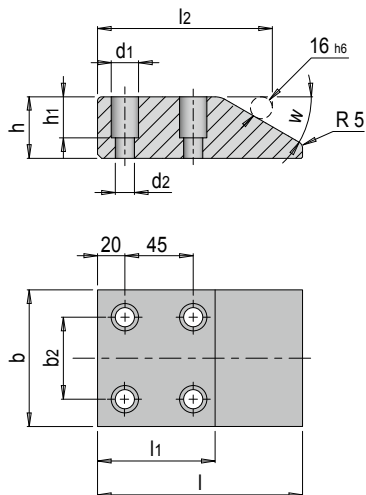
Mat.: 2.0598 / Graphite \approx 180 HB

VDI 3357

w	d1	h1	l1	b2	d2	l2	b	l	h	No.
30°	20	30	90	60	13.5	127.86	100	150	45	E 6140 B/100x150/45
20°		143.37				E 6140 B/100x170/45				
30°	20	45	90	60	13.5	127.86	100	150	45	E 6140 B/100x170/60
20°		143.37				E 6140 B/125x150/45				
30°	20	30	90	85	13.5	143.37	125	170	45	E 6140 B/125x170/45
20°		127.86				E 6140 B/125x170/60				



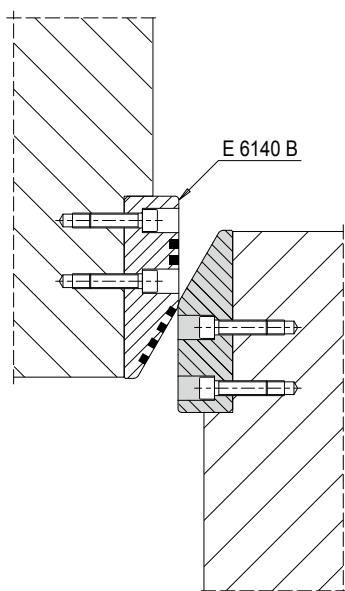
E 6140 ST CAM DWELL WEAR PLATE, STEEL, VDI 3357



Mat.: 1.7131 58 - 60 HRC

VDI 3357

w	d1	h1	l1	b2	d2	l2	b	l	h	No.
30°	20	30	90	60	13.5	127.86	100	150	45	E 6140 ST/100x150/45
20°		45				143.37		170	45	E 6140 ST/100x170/45
30°		30		127.86		125	150	45	E 6140 ST/125x150/45	
20°		45		143.37			170	45	E 6140 ST/125x170/45	
30°		45		85		127.86		60	E 6140 ST/125x170/60	



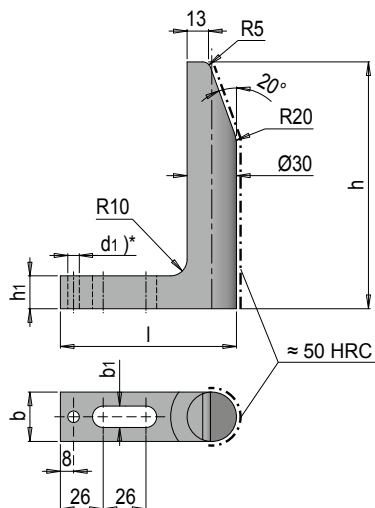
ACTIVE PARTS



- E 5626** Gauge, hardened
- E 5627** Gauge, soft – short model
- E 5628** Fine gauge, hardened
- E 5629** Gauge for part position control
- E 5674** Embossing stamp holder
- E 56742** Embossing stamp insert
- E 5676** Visual locator setting punch



E 5626 GAUGE, HARDENED



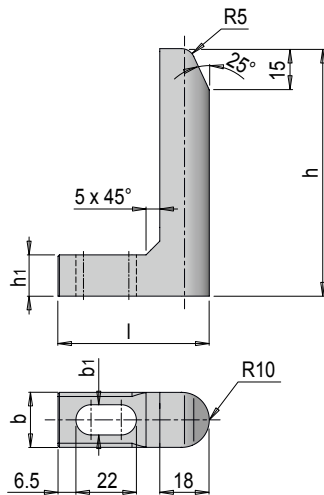
Mat.: 1.1191

b	l	b ₁	d ₁)*	h ₁	h	No.
30	107	13.5	8	20	65	E 5626/ 65
					90	E 5626/ 90
					120	E 5626/120
					150	E 5626/150
					180	E 5626/180
					250	E 5626/250
					300	E 5626/300
350	E 5626/350					

d₁)* Pilot hole for dowel pin

i Always insert the blank gauge into a groove

E 5627 GAUGE, SOFT – SHORT MODEL

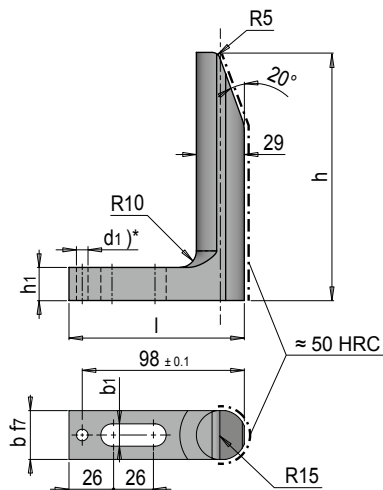


Mat.: 1.1191

b	l	b ₁	h ₁	h	No.
20	55	11	15	55	E 5627/ 55
				65	E 5627/ 65
				90	E 5627/ 90
				95	E 5627/ 95
				120	E 5627/120

i Always insert the blank gauge into a groove

E 5628 FINE GAUGE, HARDENED



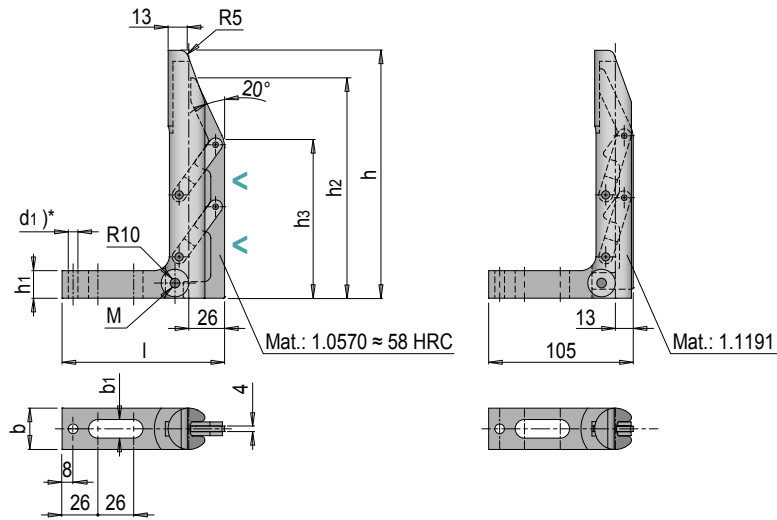
Mat.: 1.1191

b	l	b ₁	d ₁	h ₁	h	No.
29.5	106	13.5	8	20	65	E 5628/ 65
					90	E 5628/ 90
					120	E 5628/120
					150	E 5628/150
					180	E 5628/180
					250	E 5628/250
					300	E 5628/300
					350	E 5628/350

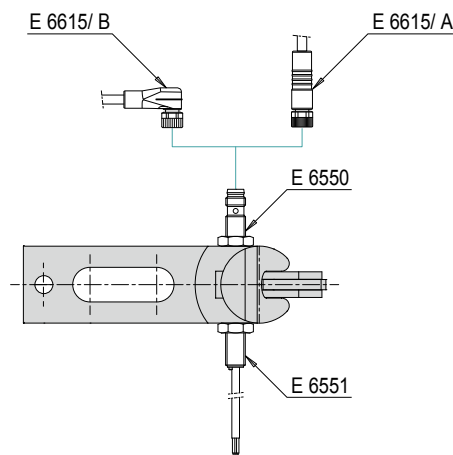
d₁* Pilot hole for dowel pin

i Always insert the blank gauge into a groove

E 5629 GAUGE FOR PART POSITION CONTROL



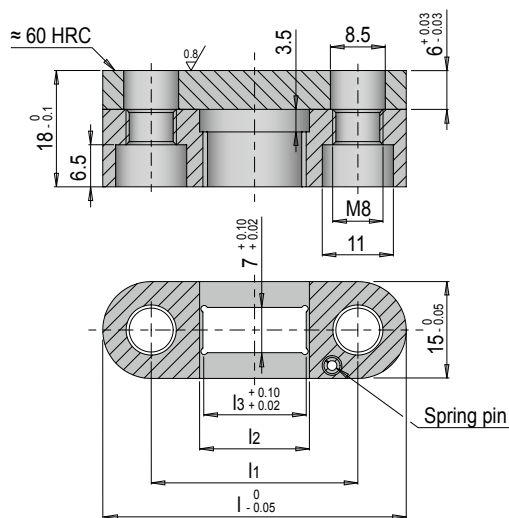
b	l	b1	d1)*	h1	h3	h	h2	M	No.
30	118	13.5	7	20	78	120	113	M 8 x 1	E 5629/120/ 113/ M8x1
					90	150	130	M 8 x 1	E 5629/150/ 130/ M8x1
					114	180	160	M 8 x 1	E 5629/180/ 160/ M8x1
						250	160	M 8 x 1	E 5629/250/ 160/ M8x1
					184	250	230	M 8 x 1	E 5629/250/ 230/ M8x1



d1)* Pilot hole for dowel pin

i Always insert the blank gauge into a groove

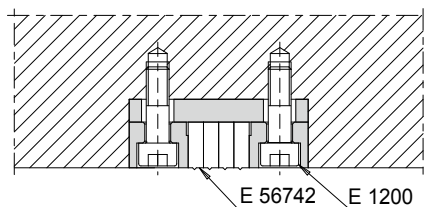
E 5674 EMBOSSING STAMP HOLDER



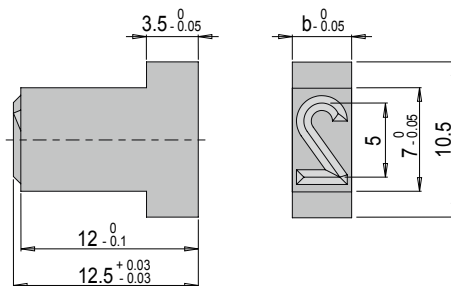
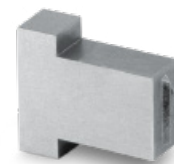
Mat.: 1.2842

l_1	l_2	l_3	l	$z)^*$	No.
32	17	16	47	4	E 5674/47/4
40	25	24	55	6	E 5674/55/6

$z)^*$ Number of E 56742 Embossing stamp inserts

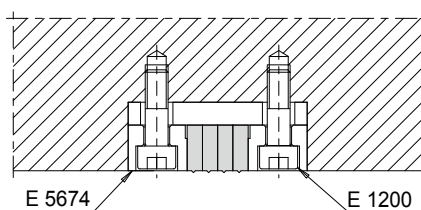


E 56742 EMBOSSING STAMP INSERT

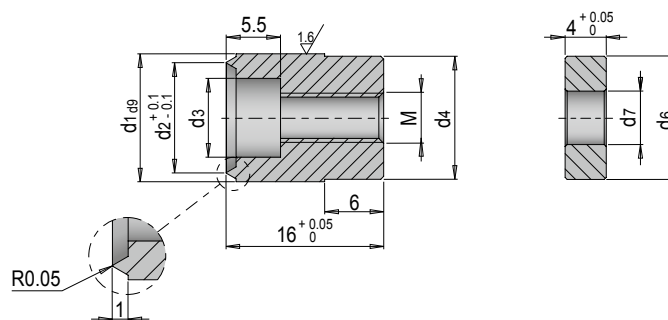


Mat.: 1.2379 ≈ 62 HRC

b	Digit	No.
4	0	E 56742/ 0
	1	E 56742/ 1
	2	E 56742/ 2
	3	E 56742/ 3
	4	E 56742/ 4
	5	E 56742/ 5
	6	E 56742/ 6
	7	E 56742/ 7
	8	E 56742/ 8
	9	E 56742/ 9
	-	E 56742/BS
		no digit

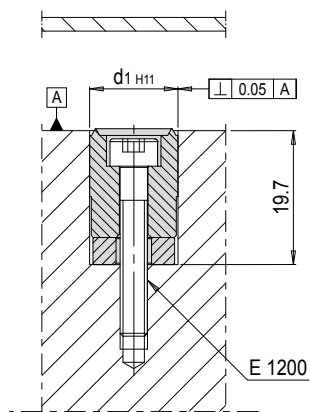


E 5676 VISUAL LOCATOR SETTING PUNCH



Mat.: 1.2210 ≈ 60 HRC

d2	d3	M	d4	d6	d7	d1	No.
8	6	M4	9.5	9.7	4.2	10	E 5676/10
11.2	8	M5	12.5	12	5.2	13	E 5676/13



CUTTING ELEMENTS



E 5570 Ball-lock cutting punch, heavy duty



E 5571 Ball-lock cutting punch, heavy duty, with ejector



E 5810 Triangular punch retainer plate for ball-lock cutting punches, heavy duty



E 5800 Triangular punch retainer plate for ISO 8020



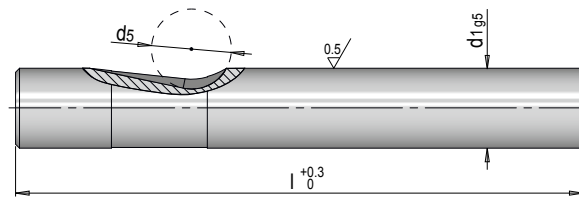
E 5801 Triangular punch retainer plate for ISO 8020, with anti-rotation protection



E 5830 Triangular wear plate



E 5570 BALL-LOCK CUTTING PUNCH, HEAVY DUTY

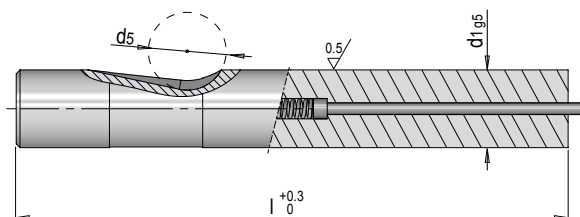


Mat.: 1.3343 (HSS) ≈ 62 HRC

≈ ISO 10071-2
Type A

d5	d1	l	No.	
10	10	71	E 5570/ 10 x 71	
		80	E 5570/ 10 x 80	
		100	E 5570/ 10 x 100	
12	13	71	E 5570/ 13 x 71	
		80	E 5570/ 13 x 80	
		100	E 5570/ 13 x 100	
	16	16	71	E 5570/ 16 x 71
			80	E 5570/ 16 x 80
			100	E 5570/ 16 x 100
	20	20	71	E 5570/ 20 x 71
			80	E 5570/ 20 x 80
			100	E 5570/ 20 x 100
	25	25	71	E 5570/ 25 x 71
			80	E 5570/ 25 x 80
			100	E 5570/ 25 x 100
32	32	71	E 5570/ 32 x 71	
		80	E 5570/ 32 x 80	
		100	E 5570/ 32 x 100	

E 5571 BALL-LOCK CUTTING PUNCH, HEAVY DUTY, WITH EJECTOR

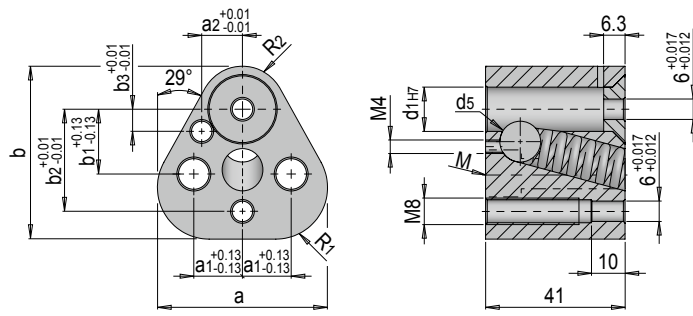


Mat.: 1.3343 (HSS) ≈ 62 HRC

≈ ISO 10071-2
Type E

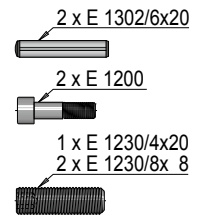
d5	d1	l	No.
10	10	71	E 5571/ 10 x 71
		80	E 5571/ 10 x 80
		100	E 5571/ 10 x 100
12	13	71	E 5571/ 13 x 71
		80	E 5571/ 13 x 80
		100	E 5571/ 13 x 100
	16	71	E 5571/ 16 x 71
		80	E 5571/ 16 x 80
		100	E 5571/ 16 x 100
	20	71	E 5571/ 20 x 71
		80	E 5571/ 20 x 80
		100	E 5571/ 20 x 100
	25	71	E 5571/ 25 x 71
		80	E 5571/ 25 x 80
		100	E 5571/ 25 x 100
	32	71	E 5571/ 32 x 71
		80	E 5571/ 32 x 80
		100	E 5571/ 32 x 100

E 5810 TRIANGULAR PUNCH RETAINER PLATE FOR BALL-LOCK CUTTING PUNCHES, HEAVY DUTY

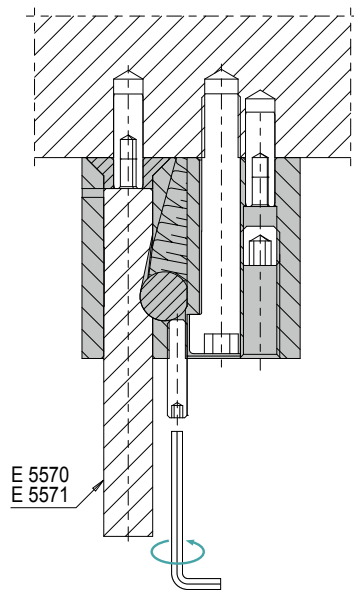


Mat.: 1.6523 ≈60 HRC

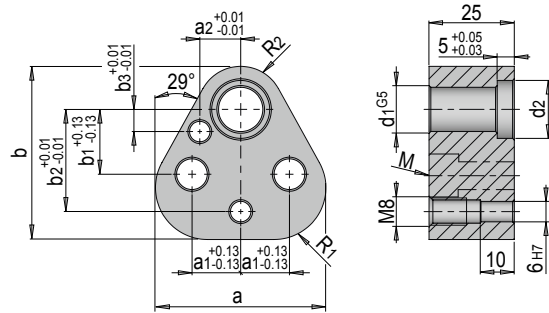
≈ DIN ISO 11900-3
Type E



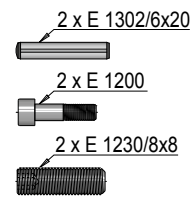
a	b	a ₁	b ₁	R ₁	a ₂	b ₂	R ₂	b ₃	d ₅	M	d ₁	No.	
43.7	44.5	11.1	19.0	12.0	9.0	26.925	9.5	7.5	10	M 8 x 45	10	E 5810/10	
50.0	50.8	14.3		15.2	12.0	29.970	12.7	6.5			12	13	E 5810/13
53.2	54.0	15.9		16.8	13.5	31.750	14.3	6.0			16	E 5810/16	
59.5	60.3	17.5		20.0	16.5	33.530	17.5	5.0			20	E 5810/20	
69.1	69.9	19.8	23.8	24.7	22.0	40.640	22.2	7.0		M12 x 50	25	E 5810/25	
												32	E 5810/32



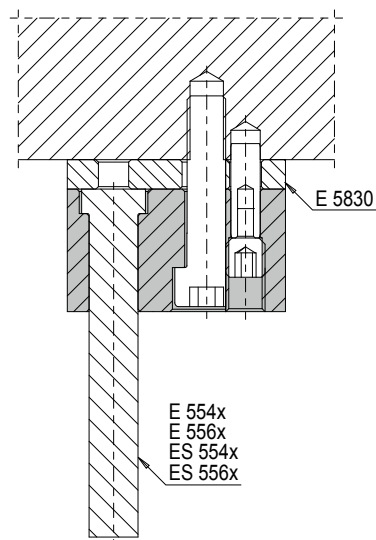
E 5800 TRIANGULAR PUNCH RETAINER PLATE FOR ISO 8020



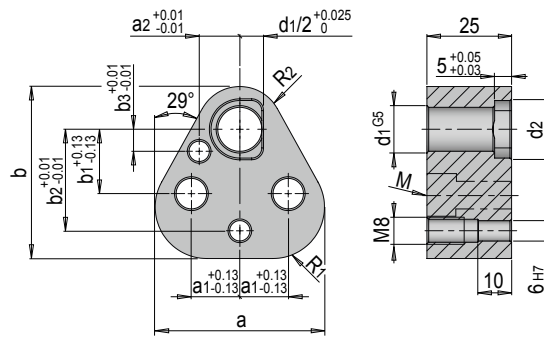
Mat.: 1.6523 ≈40 HRC



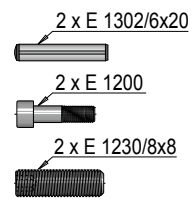
a	b	a ₁	b ₁	a ₂	R ₁	b ₂	d ₂	R ₂	b ₃	M	d ₁	No.
43.7	44.5	11.1	19.0	9.0	12.0	26.925	14.0	9.5	7.5	M 8 x 35	10	E 5800/10
50.0	50.8	14.3		12.0	15.2	29.970	17.0	12.7	6.5		13	E 5800/13
53.2	54.0	15.9		13.5	16.8	31.750	20.0	14.3	6.0		16	E 5800/16
59.5	60.3	17.5		16.5	20.0	33.530	24.0	17.5	5.0		20	E 5800/20
69.1	69.9	19.8	23.8	22.0	24.7	40.640	29.0	22.2	7.0	M10 x 40	25	E 5800/25
							36.0				M12 x 40	32



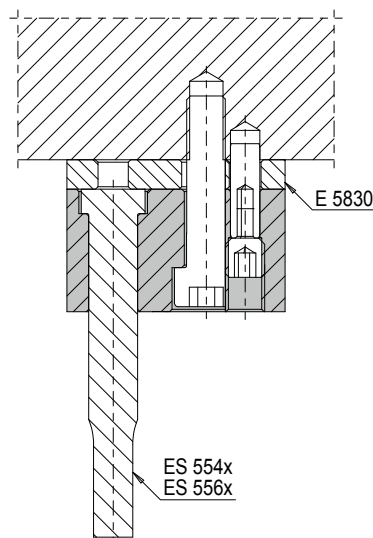
E 5801 TRIANGULAR PUNCH RETAINER PLATE FOR ISO 8020, WITH ANTI-ROTATION PROTECTION



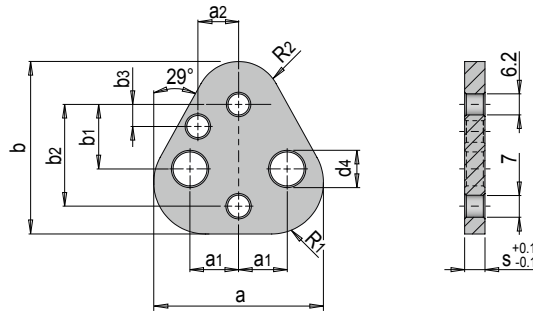
Mat.: 1.6523 ≈40 HRC



a	b	a ₁	b ₁	R ₁	a ₂	b ₂	d ₂	R ₂	b ₃	M	d ₁	No.
43.7	44.5	11.1	19.0	12.0	9.0	26.925	14.0	9.5	7.5	M 8 x 35	10	E 5801/10
50.0	50.8	14.3		15.2	12.0	29.970	17.0	12.7	6.5		13	E 5801/13
53.2	54.0	15.9		16.8	13.5	31.750	20.0	14.3	6.0		16	E 5801/16
59.5	60.3	17.5		20.0	16.5	33.530	24.0	17.5	5.0		M10 x 40	20
69.1	69.9	19.8	23.8	24.7	22.0	40.640	29.0	22.2	7.0	M12 x 40	25	E 5801/25
							36.0				32	E 5801/32

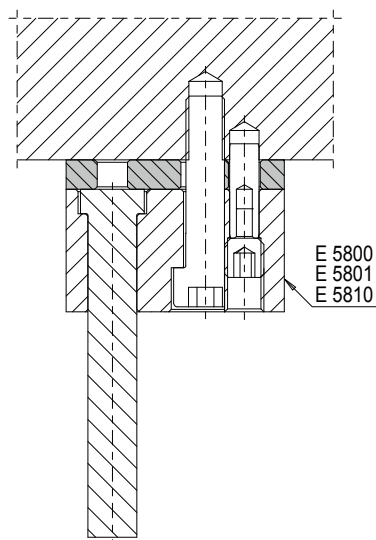


E 5830 TRIANGULAR WEAR PLATE

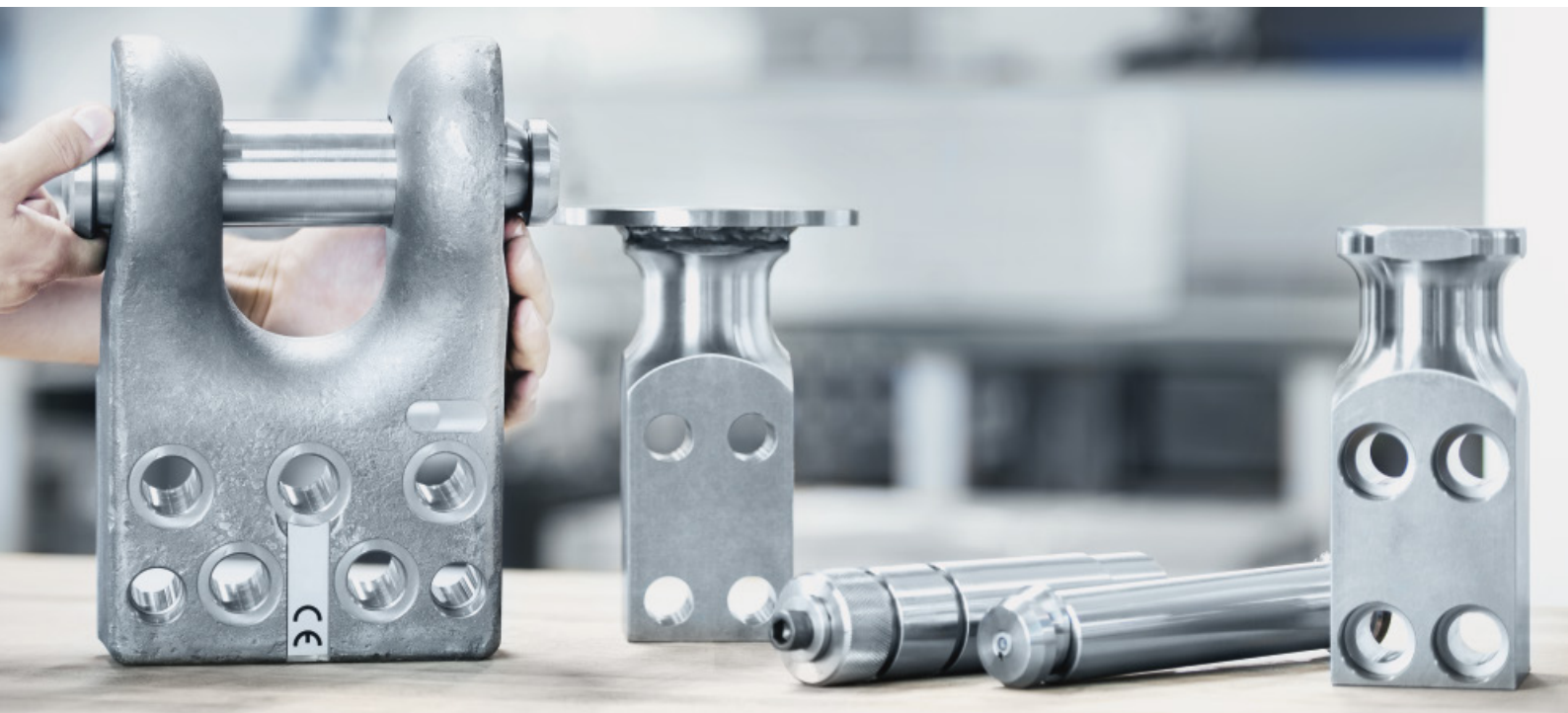


Mat.: 1.1645 ≈60 HRC (depth: 1mm)

a	b	a ₁	b ₁	R ₁	a ₂	b ₂	R ₂	b ₃	d ₄	s	d ₁	No.
43.7	44.5	11.1	19.0	12.0	9.0	26.925	9.5	7.5	10	6	10	E 5830/6 /10
50.0	50.8	14.3		15.2	12.0	29.970	12.7	6.5			13	E 5830/6 /13
53.2	54.0	15.9		16.8	13.5	31.750	14.3	6.0			16	E 5830/6 /16
59.5	60.3	17.5		20.0	16.5	33.530	17.5	5.0			12	20
69.1	69.9	19.8	23.8	24.7	22.0	40.640	22.2	7.0	14		25	E 5830/6 /25
											32	E 5830/6 /32



LIFTING AND RETAINING ELEMENTS



E 1282 Lifting stud, VDI 3366

E 1284 Lifting stud with cable securing device

E 1286 Lifting bracket with lifting pin, VW / Audi standard

E 1287 Lifting pin with safety ring, VW / Audi standard

E 1288 Lifting bracket with lifting pin, BMW standard

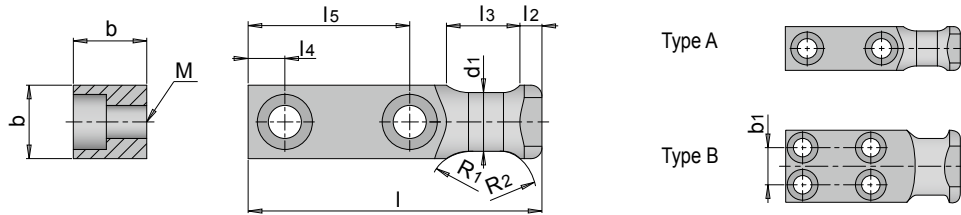
E 1289 Lifting pin with safety ring, BMW standard

E 1294 Locking pin, type 1, VDI 3365

E 1295 Locking pin, type 2, VDI 3365



E 1282 LIFTING STUD VDI 3366

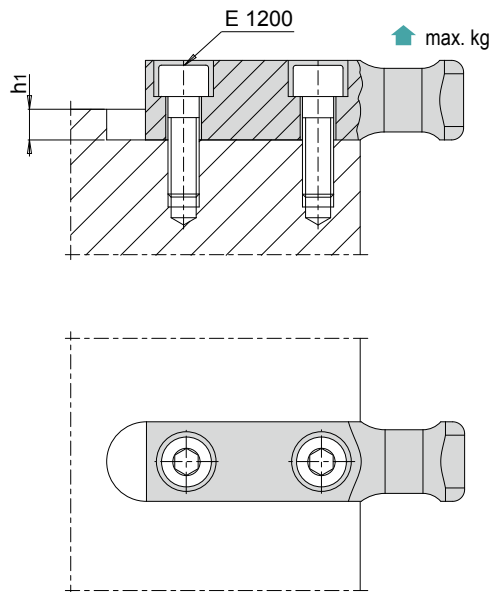


Mat.: 1.0503 $\approx 700 \text{ N/mm}^2$

VDI 3366

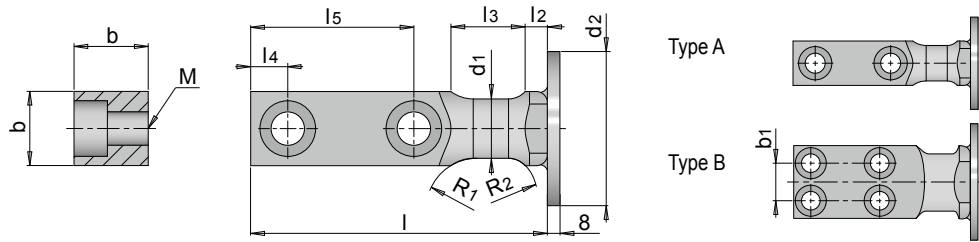


Type	E 1200/..	max. kg	b	l	b1	h1	l2	l3	l4	l5	M	R1	R2	d1	No.
A	8 x 25	320	20	80	-	6	6	20	10	44	M 8	10	6	16	E 1282/ 16
	10 x 30	630	25	90	-	8	8	25	10	47	M10	12	8	20	E 1282/ 20
	12 x 40	1250	35	100	-	10	-	30	12	50	M12	15	10	25	E 1282/ 25
	16 x 45	2000	40	120	-	10	10	32	16	62	M16	-	-	32	E 1282/ 32
	20 x 60	3200	50	140	-	12	-	40	18	72	M20	20	12.5	40	E 1282/ 40
	24 x 70	5000	60	160	-	14	12	45	22	81	M24	-	-	50	E 1282/ 50
B	20 x 90	8000	80	200	40	16	-	50	20	98	M20	25	15	63	E 1282/ 63
	24 x 120	12500	100	250	50	18	15	65	25	125	M24	35	20	80	E 1282/ 80
	30 x 140	20000	120	300	60	20	-	80	30	155	M30	40	25	100	E 1282/100



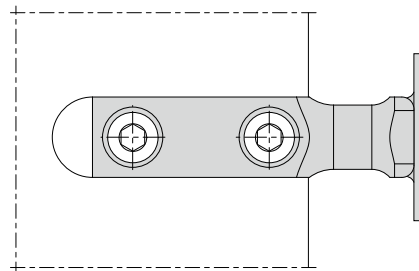
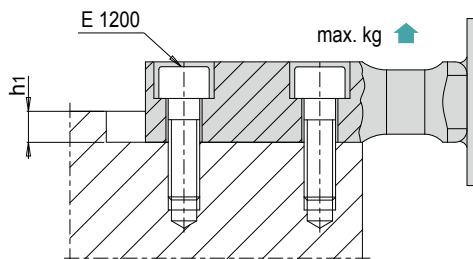
i For safety reasons, always take into account that two supporting lifting studs must carry the weight of the entire die.

E 1284 LIFTING STUD WITH CABLE SECURING DEVICE



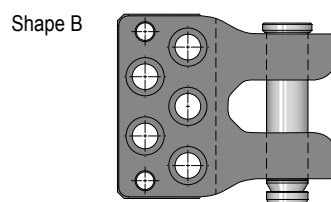
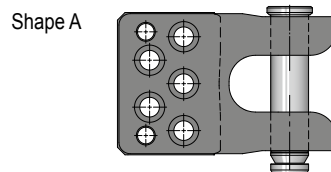
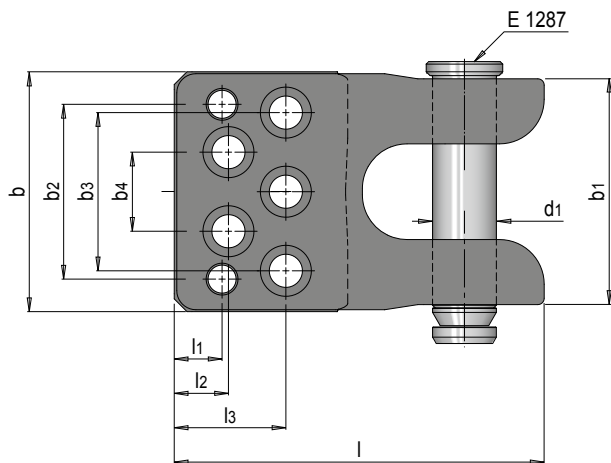
Mat.: 1.0503 $\approx 700 \text{ N/mm}^2$

Type	E 1200/..	max. kg	b	l	b1	h1	d2	l2	l3	l4	l5	M	R1	R2	d1	No.	
A	8 x 25	320	20	80	-	6	60	6	20	10	44	M 8	10	6	16	E 1284/ 16	
	10 x 30	630	25	90	-	8	70	8	25	10	47	M10	12	8	20	E 1284/ 20	
	12 x 40	1250	35	100	-	10	-	-	30	12	50	M12	15	10	25	E 1284/ 25	
	16 x 45	2000	40	120	-	10	110	10	32	16	62	M16	-	-	32	E 1284/ 32	
	20 x 60	3200	50	140	-	12	-	-	40	18	72	M20	20	12.5	40	E 1284/ 40	
B	24 x 70	5000	60	160	-	14	150	12	45	22	81	M24	-	-	50	E 1284/ 50	
	20 x 90	8000	80	200	40	16	-	-	50	20	98	M20	25	15	63	E 1284/ 63	
	24 x 120	12500	100	250	50	18	-	15	65	25	125	M24	35	20	80	E 1284/ 80	
	30 x 140	20000	120	300	60	20	-	-	-	80	30	155	M30	40	25	100	E 1284/100
										-	-	-	-	-	-	-	-



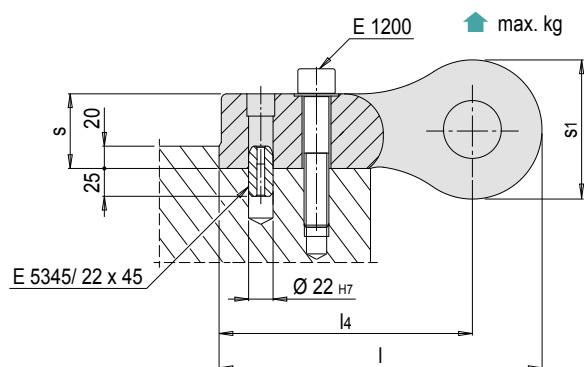
i For safety reasons, always take into account that two supporting lifting studs must carry the weight of the entire die.

E 1286 LIFTING BRACKET WITH LIFTING PIN, VW / AUDI STANDARD



Mat.: 1.0570

Shape	max. kg	E 1200/ ..	b	l	s	b ₁	l ₁	s ₁	b ₂	l ₂	b ₃	l ₃	b ₄	l ₄	d ₁	No.
A	8.000	24 x 100	188	290	67	177	37.5	125	137	42.5	124	87.5	62	227.5	50	E 1286/ 50
B	12.000	36 x 120	280	333	91	220	42	150	214	42	180	107	90	258	63	E 1286/ 63

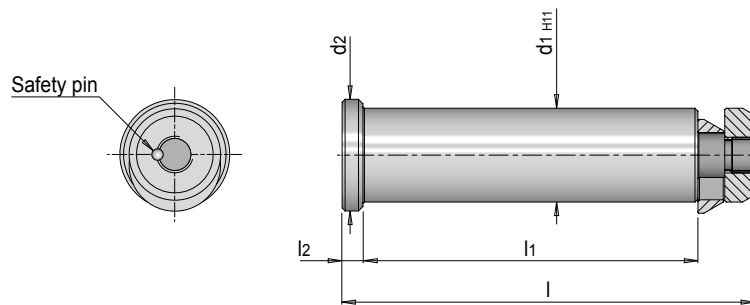


i For safety reasons, always take into account that two lifting brackets must carry the weight of the entire die.

E 1287 LIFTING PIN WITH SAFETY RING, VW / AUDI STANDARD



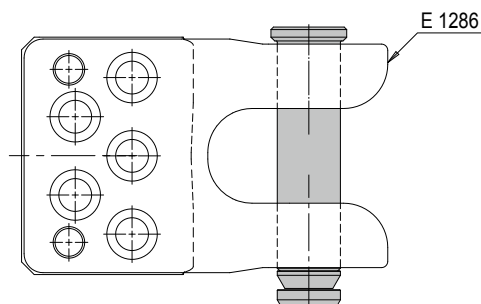
» Compatible to E 1286



Mat.: 1.1191

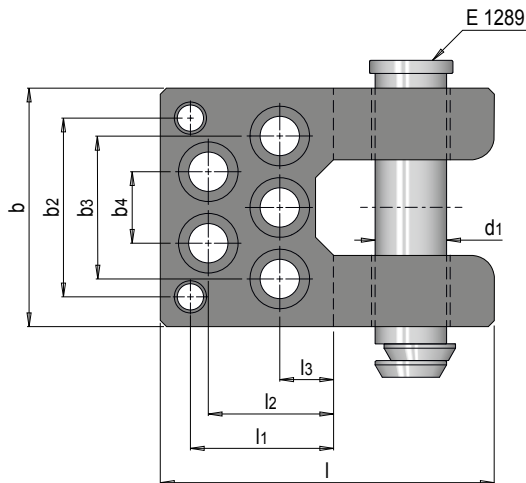


max. kg	l	l ₁	d ₂	l ₂	d ₁	No.
8.000	221	182	60	11	50	E 1287/ 50
12.000	277	225	75	14	63	E 1287/ 63



i For safety reasons, always take into account that two lifting pins must carry the weight of the entire die.

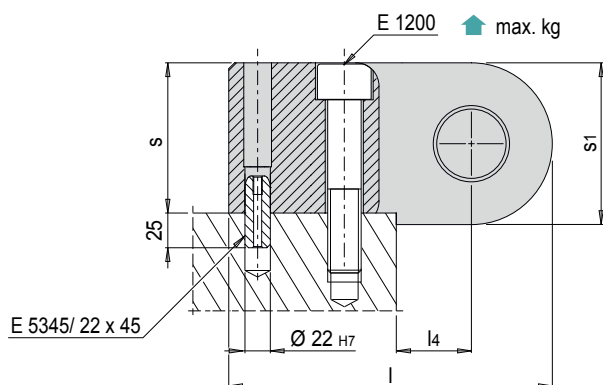
E 1288 LIFTING BRACKET WITH LIFTING PIN, BMW STANDARD



Mat.: 1.0570



max. kg	E 1200/ ..	b	l	s	l ₁	s ₁	b ₂	l ₂	b ₃	l ₃	b ₄	l ₄	d ₁	No.
3.200	16 x 80	126	185	75	85	80	90	65	80	30	40	40	30	E 1288/ 30
5.000	20 x 100	150	210	95	87	100	104	65	90	25	45	50	40	E 1288/ 40
8.000	24 x 120	175	240	115	95	120	125	80	100	35	50	60	50	E 1288/ 50
12.500	36 x 160	200	300	130	145	140	155	125	130	60	70	65	60	E 1288/ 60

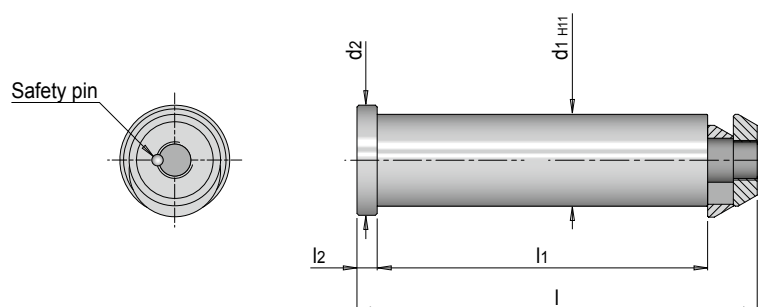


i For safety reasons, always take into account that two lifting brackets must carry the weight of the entire die.

E 1289 LIFTING PIN WITH SAFETY RING, BMW STANDARD



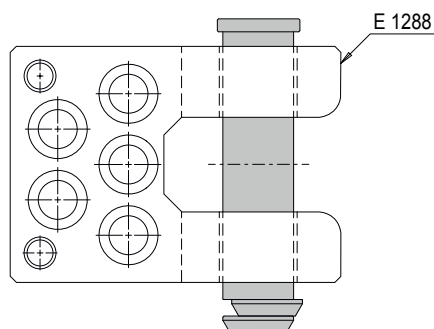
» Compatible to E 1288



Mat.: 1.1191

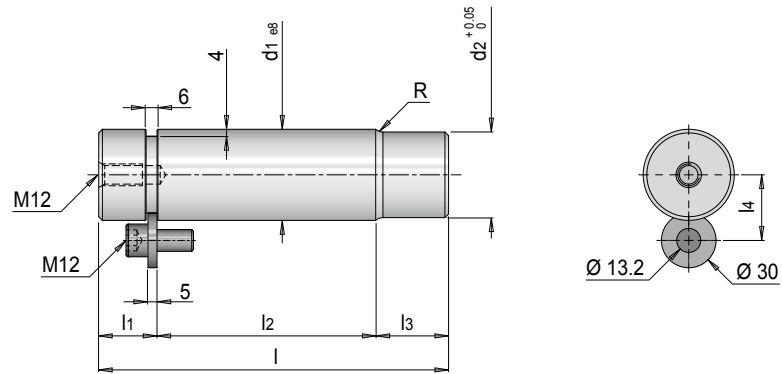


max. kg	l	l ₁	d ₂	l ₂	d ₁	No.
3.200	158	129	40	10	30	E 1289/ 30
5.000	187	155	50		40	E 1289/ 40
8.000	220	180	60	11	50	E 1289/ 50
12.500	246	205	70		60	E 1289/ 60



i For safety reasons, always take into account that two lifting pins must carry the weight of the entire die.

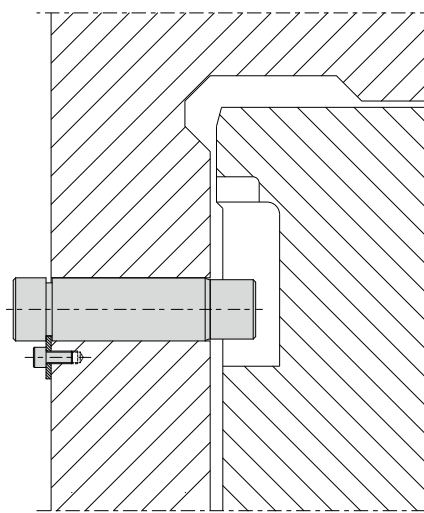
E 1294 LOCKING PIN, TYPE 1, VDI 3365



Mat.: 1.7225 $\approx 1000 \text{ N/mm}^2$

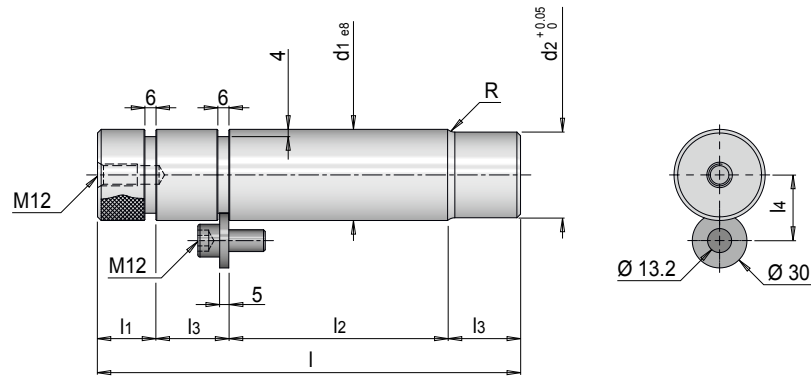
VDI 3365

F max.)* [kN]	R	l ₁	d ₂	l ₂	l ₃	l ₄	d ₁	l	No.
3	4	22	29	58	25	27	32	105	E 1294/ 32 x 105
				75				122	E 1294/ 32 x 122
5	5	32	37	75	32	31	40	139	E 1294/ 40 x 139
				95				159	E 1294/ 40 x 159
7.5	6		47	95	40	36	50	167	E 1294/ 50 x 167
				120				192	E 1294/ 50 x 192
12.5			60	120	50	42.5	63	202	E 1294/ 63 x 202
				155				237	E 1294/ 63 x 237



F max.)* Maximum permissible load capacity per bolt (dynamic load)

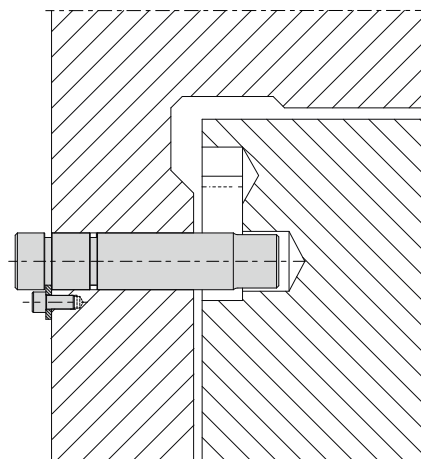
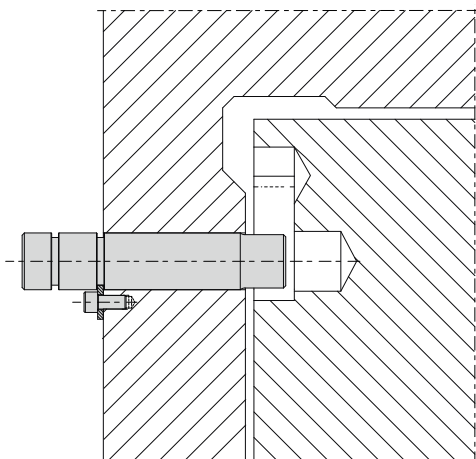
E 1295 LOCKING PIN, TYPE 2, VDI 3365



Mat.: 1.7225 $\approx 1000 \text{ N/mm}^2$

VDI 3365

F max.)* [kN]	R	l ₁	d ₂	l ₂	l ₃	l ₄	d ₁	l	No.
3	4	22	29	58	25	27	32	130	E 1295/ 32 x 130
				75				147	E 1295/ 32 x 147
5	5	32	37	75	32	31	40	171	E 1295/ 40 x 171
				95				191	E 1295/ 40 x 191
				120				207	E 1295/ 50 x 207
7.5	6	32	47	95	40	36	50	232	E 1295/ 50 x 232
				120				252	E 1295/ 63 x 252
				155				287	E 1295/ 63 x 287
12.5			60	120	50	42.5	63	252	E 1295/ 63 x 252
				155	50	42.5	63	287	E 1295/ 63 x 287



F max.)* Maximum permissible load capacity per bolt (dynamic load)

ATTACHMENTS



E 5300

Spacer



E 5304

Centring unit with shim, type A



E 5305

Centring unit with shim type B



E 5310

Spacer plate, toothed, with shim



E 5345

Centring bolt



E 5346

Centring bolt with counterbore

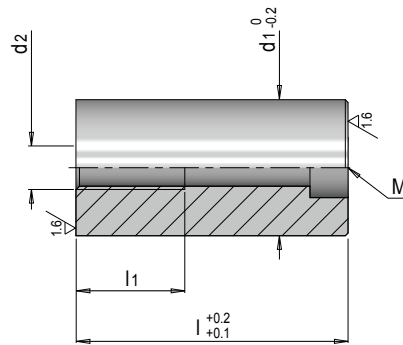


E 5350

Fitting key for transfer dies



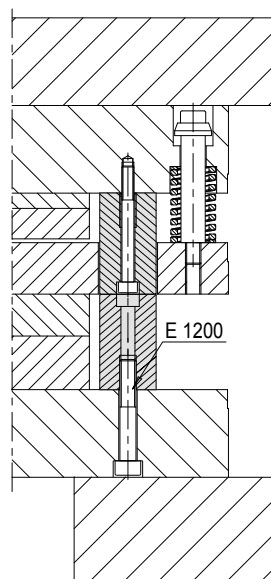
E 5300 SPACER



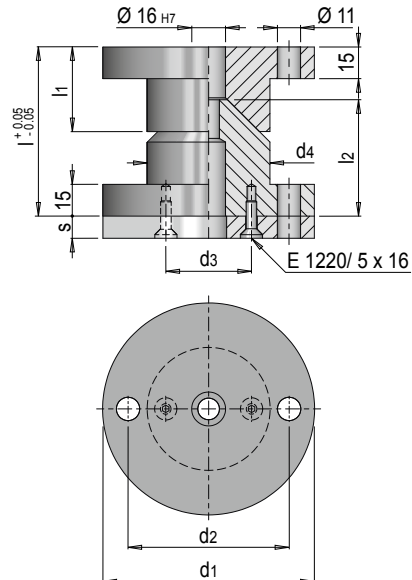
Mat.: 1.7131 ≈ 58 HRC

3.2/

l_1	d_2	M	d_1	l	No.
20	M 8	M 6	25	30	E 5300/25 x 30
				35	E 5300/25 x 35
				40	E 5300/25 x 40
				45	E 5300/25 x 45
				50	E 5300/25 x 50
				55	E 5300/25 x 55
				60	E 5300/25 x 60
				70	E 5300/25 x 70
				150	E 5300/25 x 150
				23	M10
45	E 5300/40 x 45				
50	E 5300/40 x 50				
55	E 5300/40 x 55				
60	E 5300/40 x 60				
70	E 5300/40 x 70				
80	E 5300/40 x 80				
150	E 5300/40 x 150				
25	M12	M10	60	60	E 5300/60 x 60
				70	E 5300/60 x 70
				80	E 5300/60 x 80
				100	E 5300/60 x 100
				150	E 5300/60 x 150



E 5304 CENTRING UNIT WITH SHIM, TYPE A



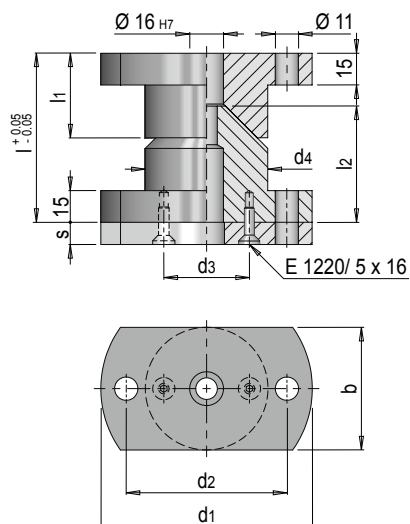
Mat.: 1.7131 \approx 60 HRC / 1.1730 \approx 640 N/mm²

l1	l2	d2	d3	d4	d1	l	s	No.
40	55	76	40.5	58	100	80	5.5	E 5304/100 x 80/ 5.5
							10.5	E 5304/100 x 80/ 10.5
50	65	96	50.5	78	120	90	5.5	E 5304/120 x 90/ 5.5
							10.5	E 5304/120 x 90/ 10.5



- » Ideally suited for centring of upper and lower parts
- » Exact height adjustment possible with the shim supplied
- » Optimal wear protection through case-hardened version with 60 HRC

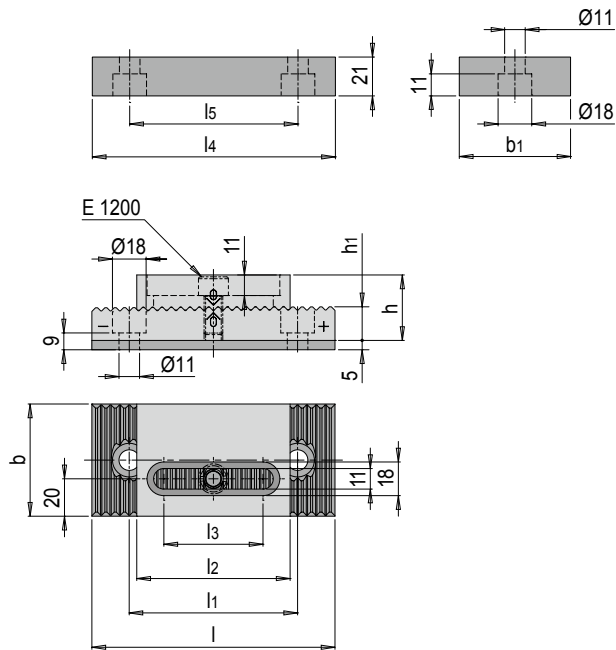
E 5305 CENTRING UNIT WITH SHIM, TYPE B



Mat.: 1.7131 ≈ 60 HRC / 1.1730 ≈ 640 N/mm²

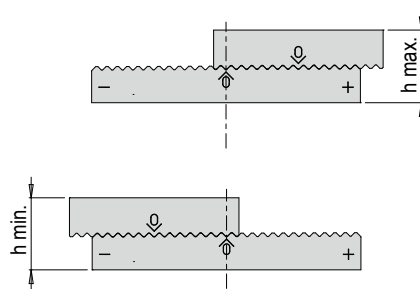
b	l ₁	l ₂	d ₂	d ₃	d ₄	d ₁	l	s	No.
58	40	55	76	40.5	58	100	80	5.5	E 5305/100 x 80/ 5.5
								10.5	E 5305/100 x 80/ 10.5
78	50	65	96	50.5	78	120	90	5.5	E 5305/120 x 90/ 5.5
								10.5	E 5305/120 x 90/ 10.5

E 5310 SPACER PLATE, TOOTHED, WITH SHIM



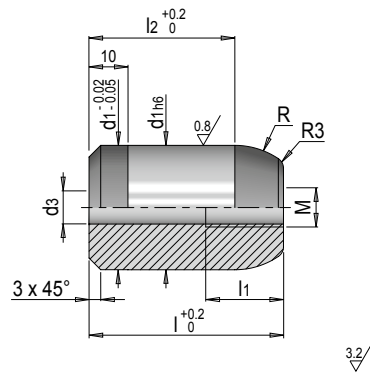
Mat.: 1.2842 ≈ 58 HRC

h	h min.	h max.	b1	h1	l1	l2	l3	l4	l5	b	l	No.
35	34.88	35.12	60	16.04	90	90	61	130	90	60	130	E 5310/60 x 130
	34.86	35.14	80	16.16	120	110	71	160	120	80	160	E 5310/80 x 160



i 0.02 mm each tooth

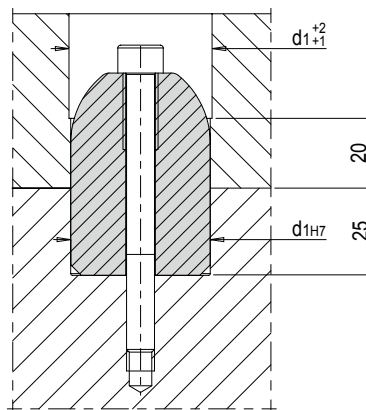
E 5345 CENTRING BOLT



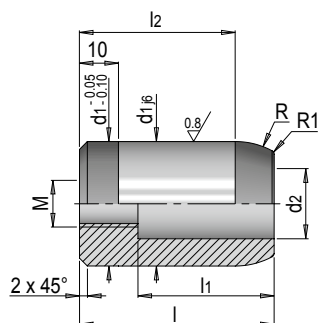
Mat.: 1.7131 ≈ 58 HRC

R	M	d ₃	l ₁	l ₂	d ₁	l	
15	M 8	7	16	35	22	45	
				45		55	
20	M10	8.5	20	37.5	32	50	
				35		55	
45				50	65		
65					85		
41.25					55		
60					56	80	

No.
 E 5345/22 x 45
 E 5345/22 x 55
 E 5345/32 x 50
 E 5345/40 x 55
 E 5345/40 x 65
 E 5345/40 x 85
 E 5345/50 x 55
 E 5345/56 x 80



E 5346 CENTRING BOLT WITH COUNTERBORE

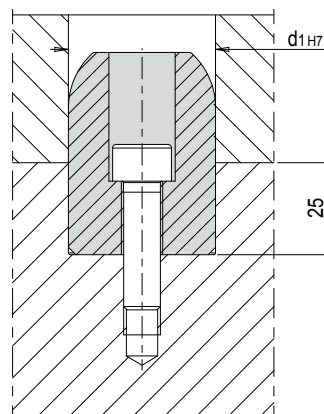


Mat.: 1.7131 ≈ 58 HRC

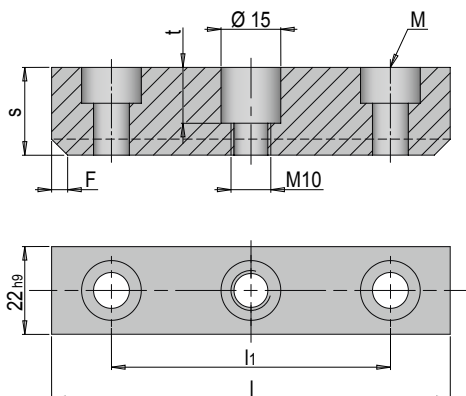
32/

R	M	d2	l1	l2	d1	l	
12.5	M10	14	25	37.5	22	45	
20	M12	18	35	40	32	50	
					40	55	
					50		

No.
 E 5346/22 x 45
 E 5346/32 x 50
 E 5346/40 x 55
 E 5346/50 x 55



E 5350 FITTING KEY FOR TRANSFER DIES



Mat.: 1.1730 \approx 640 N/mm²



M	F	t	l ₁	s	l	No.		
M8	-	-	32	14	50	E 5350/14 x 50		
			50		80	E 5350/14 x 80		
			80		100	E 5350/14 x 100		
			100		125	E 5350/14 x 125		
			32		14	50	E 5350/22 x 50	
	4 x 45°	14	14	50	22	80	E 5350/22 x 80	
				80		100	E 5350/22 x 100	
				100		125	E 5350/22 x 125	
				32		40	50	E 5350/40 x 50
				50			80	E 5350/40 x 80
				80			100	E 5350/40 x 100
				100			125	E 5350/40 x 125

Meusburger is the **leading manufacturer of high-precision standard parts**. More than 18,500 customers all over the world make use of the numerous advantages of standardisation and benefit from the company's **over 50 years of experience** in working with steel. Offering an extensive range of **standard parts**, combined with **high-grade products in the field of workshop equipment**, Meusburger is the **reliable global partner** for **making moulds, dies, jigs and fixtures**.

Save time and money with Meusburger



Top quality



Low-deformation processing



Outstanding service



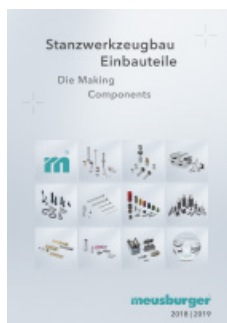
Continuous availability



Short lead times



Meusburger - Setting Standards



All rights reserved. Any use, including but not limited to publication, copying, distribution, reproduction, editing and/or modification, even in part, is prohibited without prior written authorisation of Meusburger Georg GmbH & Co.KG. Technical changes and printing or other errors reserved.

meusburger

Meusburger Georg GmbH & Co KG | Kesselstr. 42 | 6960 Wolfurt | Austria
T +43 5574 6706-0 | F -11 | verkauf@meusburger.com | www.meusburger.com