

### PRODUCT DESCRIPTION

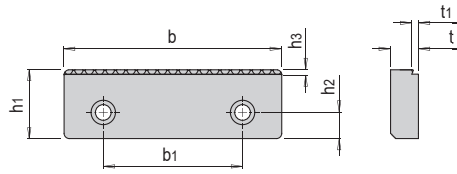
- » Suitable for HWS 500, HWS 600, HWS 650 and HWS 6502

### MATERIAL

- » 1.2510 hardened

### INCLUDED IN THE DELIVERY

- » 1 clamping jaw
- » Including screws



b1	h1	h2	h3	t	t1	b	No.	EUR
80	39.5	15	2.5	16	3.9	<b>125</b>	HWS 5610/125	<>
100	49.5	20	2.5	18	3.9	<b>160</b>	HWS 5610/160	<>